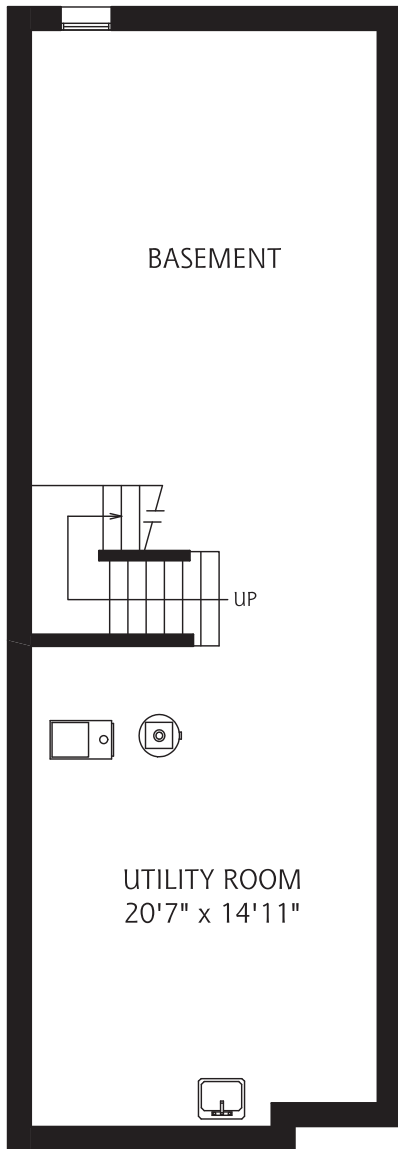
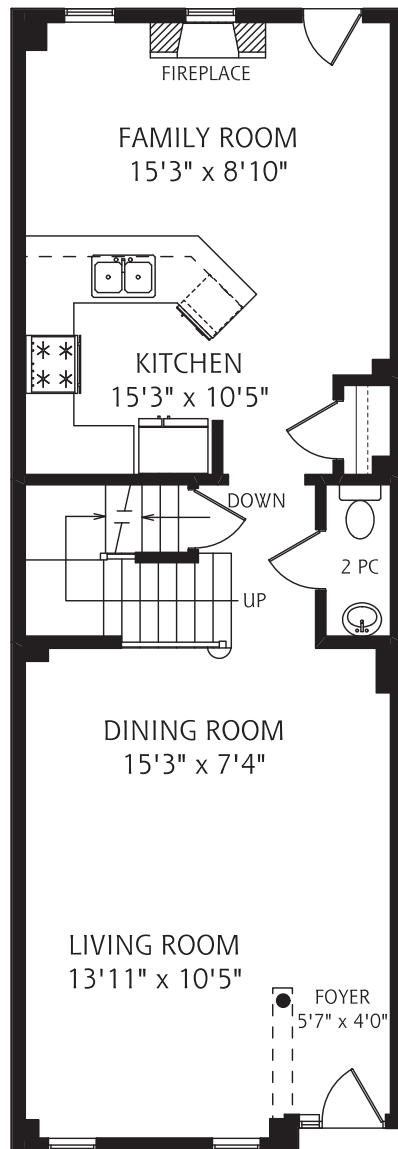


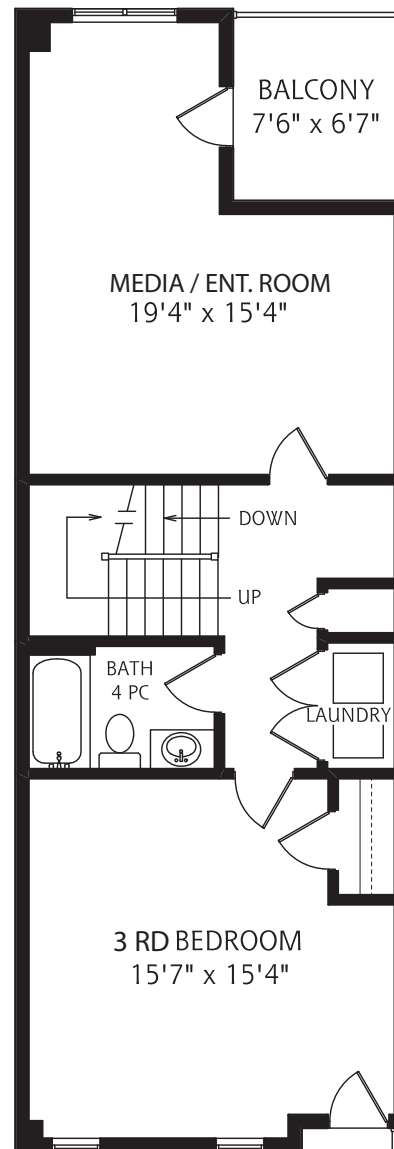
5 CROSSOVERS STREET



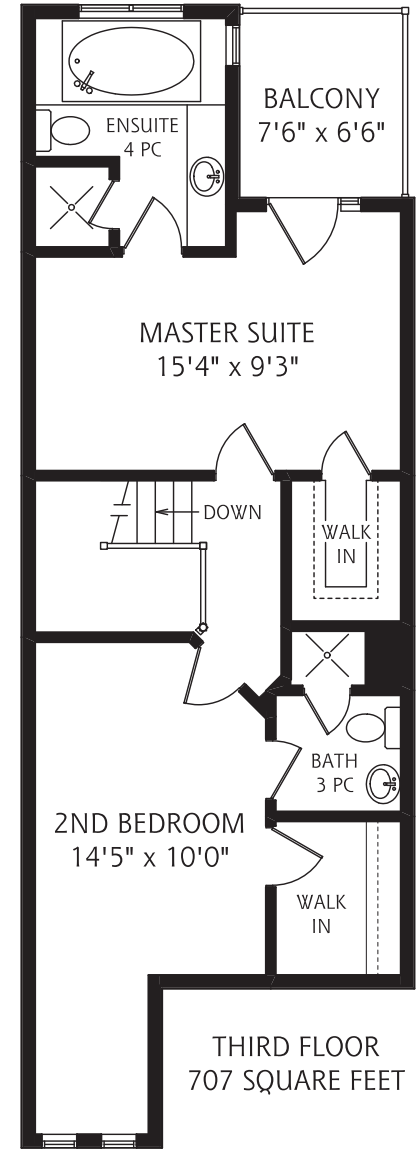
LOWER LEVEL
841 SQUARE FEET



MAIN FLOOR
841 SQUARE FEET



SECOND FLOOR
780 SQUARE FEET



THIRD FLOOR
707 SQUARE FEET



ALL MEASUREMENTS SHOULD BE CONSIDERED APPROXIMATE



(416) 946 - 1300

www.ONeillRealEstate.ca



REAL FLOOR PLANS
www.realfloorplans.com
JUL 8, 2008 - COLIN THOMSON - 416-800-7526